

VISION FOR THE FUTURE

How far are we?

Cooperation is the key word in the activities of the Association of River Waterworks (RIWA) and the International Association of Waterworks in the Rhine Catchment (IAWR). Cooperation is necessary to achieve structural, lasting solutions. Cooperation forges links between people and cultures.

Strong together

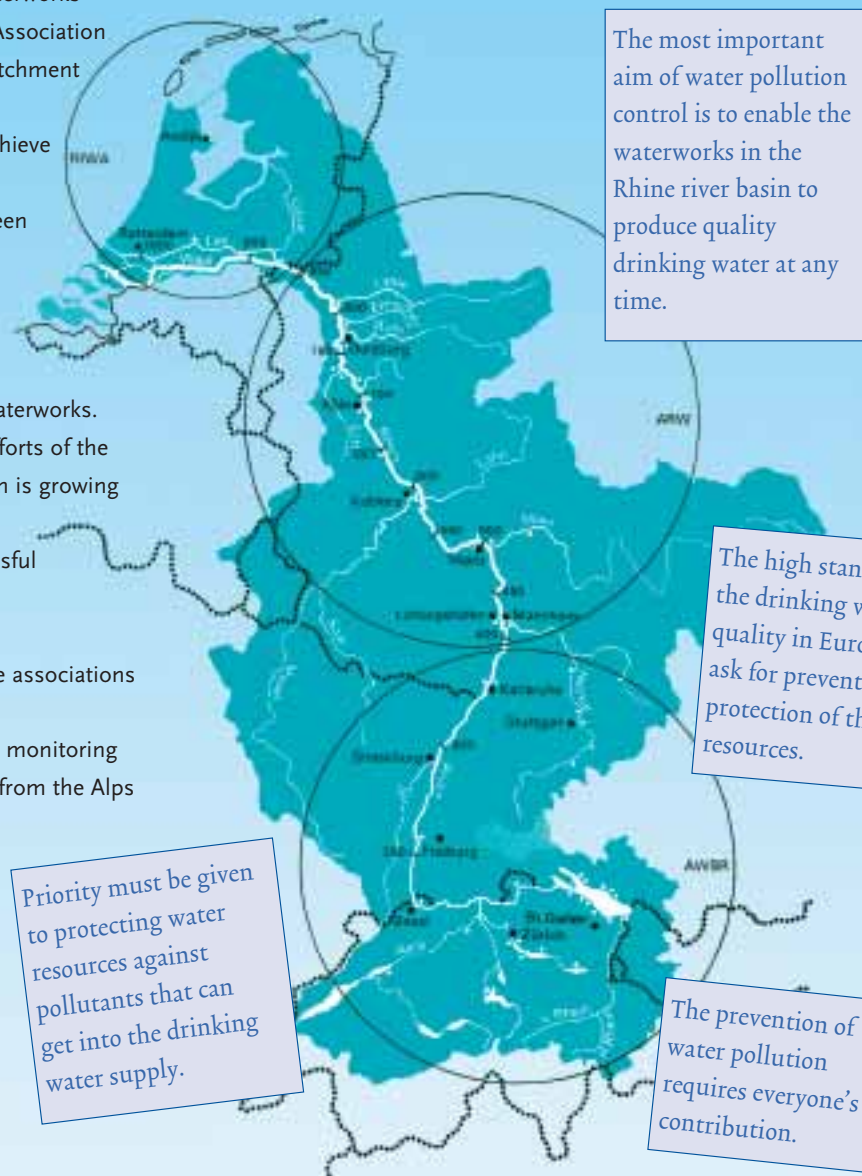
And that is one of the primary merits of this association of waterworks. Respect for the insights and efforts of the other parties in this association is growing because of the cooperation. This is a good basis for successful activities in coming years.

Some common activities of the associations of waterworks:

- a homogeneous international monitoring network in the Rhine basin, from the Alps to the North Sea,
- scientific studies on substance and parasites which are relevant for drinking water production,
- publication of monitoring results and scientific studies in annual reports and other papers,
- discussion of results with industries, governments and international commissions,
- active as NGO in the Commissions for the Protection of the Rhine and the Meuse.

The water quality achieved so far must not under any circumstances be allowed to deteriorate again.

THE QUALITY OF DRINKING WATER IN EUROPE REQUIRES PREVENTIVE PROTECTION OF THE WATER RESOURCES:



The most important aim of water pollution control is to enable the waterworks in the Rhine river basin to produce quality drinking water at any time.

The high standards for the drinking water quality in Europe ask for preventive protection of the water resources.

Priority must be given to protecting water resources against pollutants that can get into the drinking water supply.

The prevention of water pollution requires everyone's contribution.



MORE INFORMATION:



RIWA Associations of River Waterworks

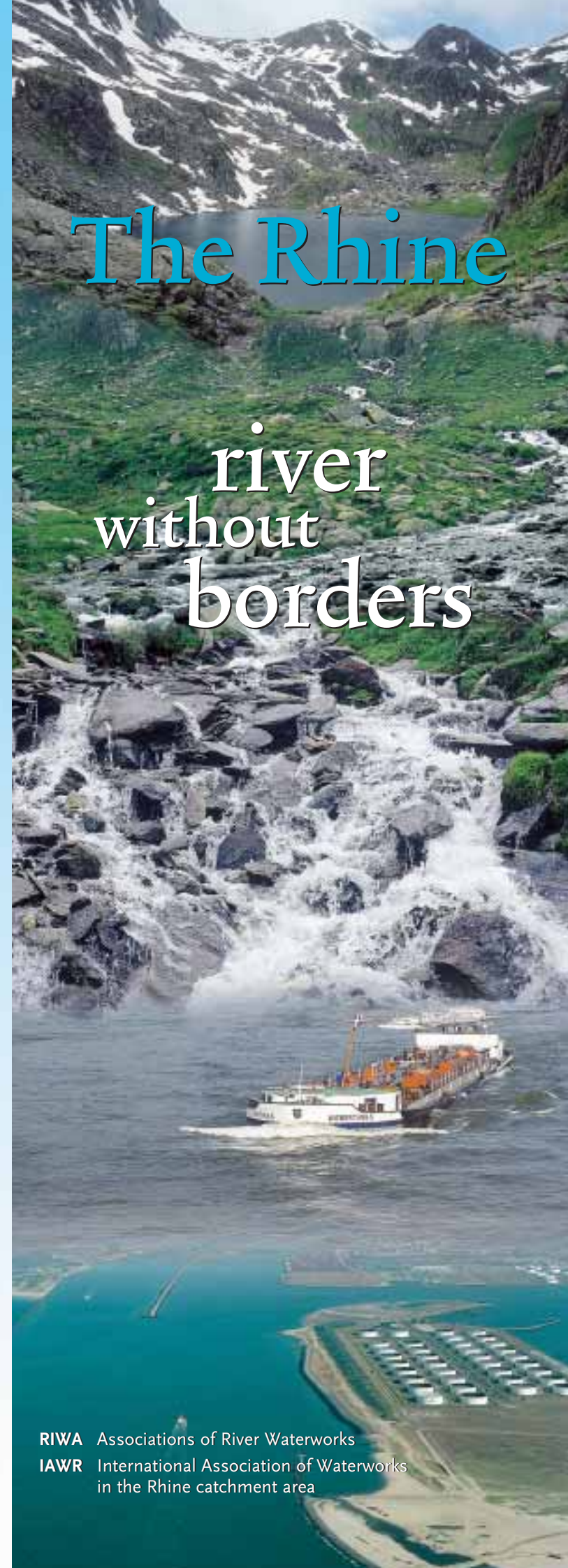
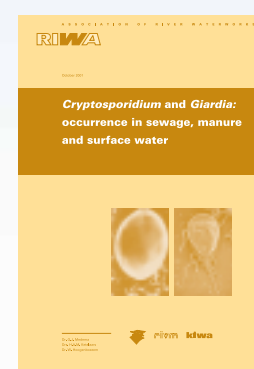
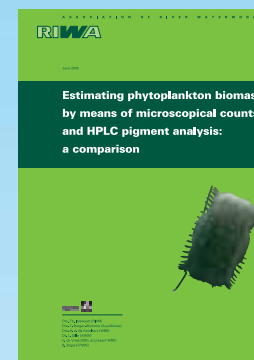
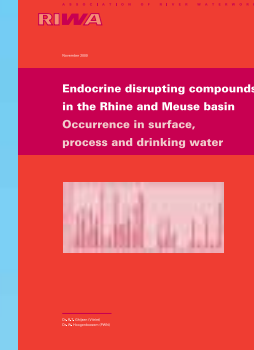
IAWR International Association of Waterworks in the Rhine catchment area

Phone: +31 (0) 30 600 90 30
Fax: +31 (0) 30 600 90 39

E-mail: riwa@riwa.org
iawr@riwa.org

Internet: www.riwa.org
www.iawr.org

Office RIWA/IAWR
P.O. Box 402
NL-3430 AK Nieuwegein



The Rhine river without borders

RIWA Associations of River Waterworks
IAWR International Association of Waterworks in the Rhine catchment area



THE RIVER RHINE

The river Rhine is 1320 km long and one of the most important rivers of central Europe. About 50 million people live in its catchment (185.000 km²), an area with large agglom-erations of industries and agricultural activities. Of course, all inhabitants need drinking water: for this purpose, Rhine water is purified.

RIWA Association of River Waterworks

In the early fifties the four largest river water companies in the Netherlands joined forces in their fight against the increasing pollution of the Rhine. Their initiative led to the foundation of the RIWA in 1951. Since then RIWA has become a powerful association of Dutch and Belgian waterworks in the catchment areas of the rivers Rhine, Meuse and Scheldt.

IAWR International Association of Waterworks in the Rhine catchment area

In 1970 RIWA joined up with two other organisations along the river Rhine: the Association of Rhine Waterworks (ARW) and the Association of Waterworks Lake Constance-Rhine (AWBR). The collaboration led to the foundation of the IAWR. As an international organisation, IAWR serves the interests of the waterworks in the entire Rhine catchment area. Nowadays RIWA and IAWR are exemplary organisations for other international associations of waterworks, for instance in the catchment area of the Danube.

IAWR International Association of Waterworks in the Rhine catchment area

IAWR unifies three associations of water-works, covering the entire catchment area of the river Rhine. Founded in 1970, a year after the pesticide endosulfan had killed massive numbers of fish in the Rhine near Bingen (Germany), IAWR was formed to make sure that a powerful gesture could be made in international matters concerning rivers. Counting about 50 waterworks at its formation, today over 120 waterworks are associated with IAWR. The organisation



watches over the interests of the drinking water of 20 million people in the catchment area of the Rhine. The IAWR is located in Nieuwegein.

RIWA Association of River Waterworks

Founded in 1951, RIWA was formed by four Dutch water supply companies that utilized the Rhine as a source for the preparation of drinking water. Nowadays 15 waterworks are members of the organisation, which monitors the sources for drinking water production of Dutch and Belgian citizens in the catchment areas of Rhine, Meuse and Scheldt. As a division of IAWR, RIWA looks after the interests of the people in the Dutch lower part of the river Rhine. The organisation is located in Nieuwegein.

ARW Association of Rhine Waterworks

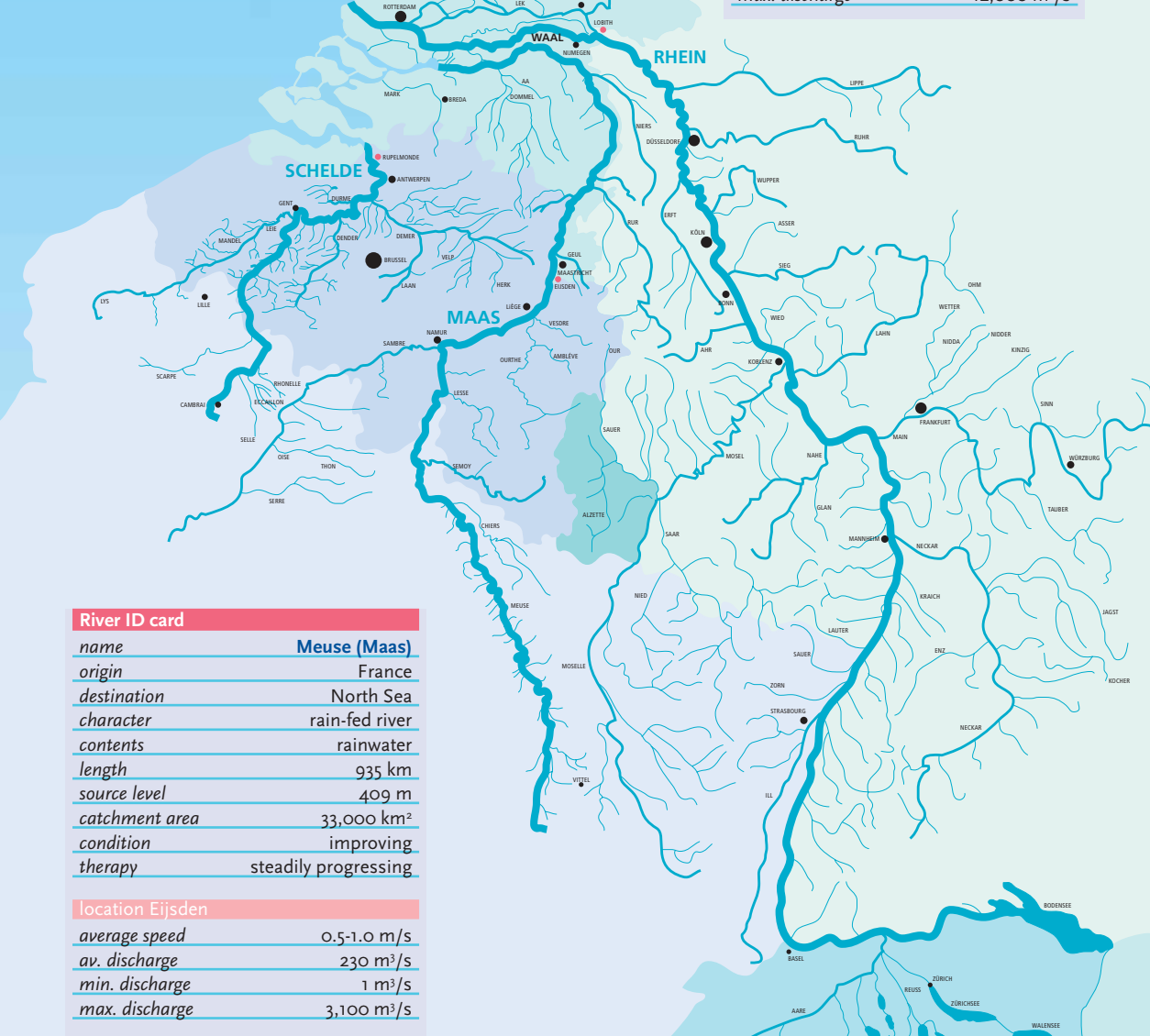
In 1957 fourteen German waterworks decided to establish the Association of Rhine Waterworks. Since then about 30 waterworks and other public utilities in the German part of the Rhine catchment area have joined ARW. The association is located in Cologne.

AWBR Association of Waterworks Lake Constance-Rhine

The Association of Waterworks Lake Constance-Rhine was founded in 1968 by about 30 water supply companies in Switzerland, France and the south of Germany. Nowadays over 70 waterworks in the upper part of the river Rhine are associated with AWBR. The organisation has member companies in Germany, Switzerland, Austria, France and Liechtenstein. The association is located in Stuttgart.

River ID card	
name	Scheldt (Escaut, Schelde)
origin	France
destination	North Sea
character	rain-fed river
contents	rainwater
length	350 km
source level	100 m
catchment area	21,900 km²
condition	rapidly out of breath
therapy	started

location Rupelmonde	
average speed	not available
av. discharge	120 m³/s
min. discharge	not available
max. discharge	not available



River ID card	
name	Meuse (Maas)
origin	France
destination	North Sea
character	rain-fed river
contents	rainwater
length	935 km
source level	409 m
catchment area	33,000 km²
condition	improving
therapy	steadily progressing

location Eijsden	
average speed	0.5-1.0 m/s
av. discharge	230 m³/s
min. discharge	1 m³/s
max. discharge	3,100 m³/s



River ID card	
name	Rhine (Rhein, Rijn)
origin	Switzerland
destination	North Sea
character	glacier river
contents	melt- and rainwater
length	1,320 km
source level	± 2,500/3,000 m
catchment area	185,000 km²
condition	regaining
therapy	progressive

location Lobith	
location	Lobith
average speed	0.5-1.5 m/s
av. discharge	2,300 m³/s
min. discharge	790 m³/s
max. discharge	12,000 m³/s

